

## Celebrate Messiah Development Nears Completion



Despite the challenges of the coronavirus pandemic, excitement is building at Celebrate Messiah and Beit Ha Mashiach as construction enters its final stage.

The building known as the Caulfield Messianic Centre is located in Caulfield Victoria, the largest Jewish community in Australia. It is the first custom built Messianic Centre in the southern hemisphere and will contain a Messianic Bible training college, offices, resource centre, dining and function centre as well as a meeting area. A feature of the dining area is a prayer wall, made of Jerusalem stone (limestone) that serves as a constant reminder of God's connection with Jerusalem and the Temple Mount. Prayer requests can be placed between the stones just as they do in Jerusalem.

Builders recently 'handed over' the property enabling Joel Plotnek, CCFS MD and Robert Palma, CCVT Property Advisor an opportunity to see first-hand the great work done by Executive Director and Rabbi Lawrence Hirsch and General Manager Mark Polonsky over the past year.

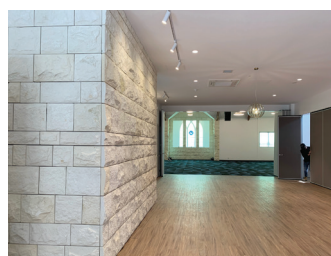
The redevelopment is testimony of God's goodness, the generosity of the church community and the hard work of the entire church team.



**LAWRENCE HIRSCH**  
EXECUTIVE DIRECTOR OF CELEBRATE MESSIAH



**MARK POLONSKY**  
GENERAL MANAGER CELEBRATE MESSIAH



was the original building made in 1921 that has been demolished

## CCFS & BEMF partnership continues to bear fruit



The partnership between CCFS and the Building Extension Mutual Fund in WA continues to grow following the merger in February this year. In the 5 months to June 2020 CCFS has, with the help of their new State Relationship Manager Pieter Brink, grown the business 228%. This enabled CCFS to make a well received donation to Churches of Christ in WA (COCWA). "We look forward to continuing to build on the strong start to this partnership and being a continual blessing for the Churches of Christ in WA" says Stuart Campbell CCFS NRM.

Via Zoom, John Hutchinson (clockwise from top left) the Interim State Minister (COCWA) is providing an update on how those funds have been utilised to the CCFS team which includes Stuart Campbell NRM, Joel Plotnek Managing Director and Pieter Brink State Relationship Manager WA.

## STAFF UPDATE

Congratulations to Mara Novembre and Karen Wilson for completing the first of three modules in their quest to become RG146 accredited. Both Mara and Karen completed the Tier 1 – Generic Knowledge module and have enrolled in the second of three modules (Tier 1 Securities – General Advice) which they hope to complete during the second half of 2020. The training is an ongoing requirement of holding an Australian Financial Services Licence (AFSL) which CCFS has held since 2016.



## Shot of Inspiration

“<sup>17</sup>And since we are his true children, we qualify to share all his treasures, for indeed, we are heirs of God himself. And since we are joined to Christ, we also inherit all that he is and all that he has. We will experience being co-glorified with him provided that we accept his sufferings as our own.”

– Romans 8:17 (TPT)

## Helpful Hints

Two recent changes have impacted Over the Counter (OTC) services provided to CCFS clients by Westpac.

1. **Large cash deposits.** Westpac have introduced a daily account limit of \$7,500 for over the counter cash deposits. Cash deposits over \$7,500 will need to be deposited to your account over multiple days.
2. **Review of the overall agency arrangement.** The current agreement between Westpac and Indue/CCFS expires 30 December 2020. Some Westpac branches have turned away CCFS customers through a misunderstanding of the agreement's end date. If this has happened or does happen to you, please contact CCFS and we will rectify the situation.

## Contact Details

**Stuart Campbell** National Relationship Manager  
T: (03) 9488 8877 E: [scampbell@ccfsaustralia.org.au](mailto:scampbell@ccfsaustralia.org.au)

**Gillian Rowe** State Coordinator SA/NT  
T: (08) 8443 7572 E: [growe@churchesofchrist-sa.org.au](mailto:growe@churchesofchrist-sa.org.au)

**Pieter Brink** State Relationship Manager WA  
T: (09) 9471 8500 E: [pbrink@ccfsaustralia.org.au](mailto:pbrink@ccfsaustralia.org.au)

**Mara Novembre** Client Relationship Consultant  
T: (03) 9488 8877 E: [info@ccfsaustralia.org.au](mailto:info@ccfsaustralia.org.au)

**Karen Wilson** Branch Operations Co-Ordinator  
T: (03) 9488 8877 E: [info@ccfsaustralia.org.au](mailto:info@ccfsaustralia.org.au)

**Meera Livingston** Customer Service Advisor  
T: (03) 9488 8877 E: [info@ccfsaustralia.org.au](mailto:info@ccfsaustralia.org.au)

**Victoria Office:**  
P.O. Box 5302,  
South Melbourne 3205

**South Australia Office:**  
2 Denby Street,  
Torrensville SA 5031

**Western Australia Office:**  
22 Plantation Street,  
Menora WA 6050